



Centennial Theatre

Where Everyone Belongs

Centennial Theatre is Directed and Produced by....

Eric Webster –

Middle School and High School Play and
Musical Co-Director and Technical Director

Middle School and High School Improv

Middle School Speech Coach

High School One Act Co-Director

Centennial Youth Theater Director
and Technical Director

C.A.S.T. Summer Shakespeare Co-Director
and Technical Director

Centennial District Performing Arts Centers
Coordinator

Summer Youth Theater Director

Summer Shakespeare Director

Laurie Tangren –

Middle School Play and Musical Co-Director

High School and Middle School play and Musical Costumer

Kris Schmidt -

Middle School and High School Set and
Props Designer and Director

Mary Rudquist –

Middle School Musical Music Director
High School Musical Co-Director

Melissa Krieger -

High School Musical Music Director
Theater Beyond Director

Shanan Custer –

One Act Co-Director
C.A.S.T. Summer Shakespeare Co-Director

Middle School Student Directors

Addie Cramer and Piper Mortenson

High School Crew Presidents

Kaymin Waldemar / Sam Berens

The Booster Board and Leads

President Melissa Carlson

Vice President: Lisa Partyka

Treasurer: Scott Cramer

Secretary: Stephanie Spencer

Marketing/Promotions and Fundraising Lead: Brandy Eckman

Lobby Decor Designer/Director: Melissa Carlson

Silent Auction Lead:

Tech Week Meal Committee:

Backstage Parent Lead:

Flower Lead:

Merchandising Lead:

Luke Hooper: Concessions lead

Centennial Theatre reminds you to Download the BAND App!



22-23 SMB BAND

Important communication from directors and boosters in the BAND app along with calendar updates.

This applies to all middle school and high school students and their families.

Follow Us On Social Media For Updates!



EVERYTHING IS AT

CentennialTheatre.org

- Mandatory meetings
- Auditions
- Rehearsal Schedule
- Forms
- Performance schedules

Centennial Youth Theatre Program

SUMMER 2026
"SHOW TBD"

ALL SCHEDULE AND REGISTRATION INFORMATION
CENTENNIALTHEATRE.ORG

Two age groups.

Group 1 – Entering 2nd grade through entering 5th grade.

Group 2 – Entering 6th grade through entering 9th grade.



CMS Improv Schedule 2025-2026

ALL SCHEDULE AND REGISTRATION INFORMATION
CENTENNIALTHEATRE.ORG

SESSION ONE - SEPTEMBER

SESSION TWO - FEBRUARY

SESSION THREE - MAY

3:00 – 4:40

AUDITORIUM Unless noted otherwise

CMS SPEECH TEAM
2025-2026

ALL SCHEDULE AND REGISTRATION INFORMATION
CENTENNIALTHEATRE.ORG

Schedule
Updates
Information
Registration

Centennial Alumni Summer Stock Theatre - C.A.S.T. Presents Shakespeare Summer Theatre

ALL SCHEDULE AND REGISTRATION INFORMATION
CENTENNIALTHEATRE.ORG

Former theater alumni and current Centennial Theatre students performed together for a summer show based on a Shakespeare production.

Featuring all ages from beginning middle school to adult.

Our July 2026 Productions Will Be:
“Julius Ceaser and Romeo and Juliet”
Directed by Shanan Custer and Eric Webster

Centennial Theatre End of the Year *NOT* a Banquet

5/29 – END OF YEAR CELEBRATION –

Theater Recognition and reveal Ceremony!

PAC – 5:30 – 8:00

Letters/ Medals/Recognition/Presidents/Theater Board/Next seasons shows

ALL INFORMATION CENTENNIALTHEATRE.ORG

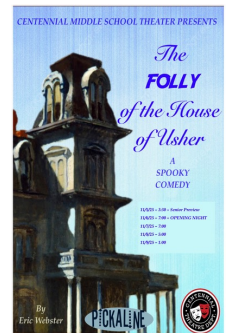
ABOUT "Folly of the House of Usher"

=

The **Hideaway Gang** receive a letter inviting them all to come stay for the weekend at the house of Roderick Usher. Roderick is asking for their help. But doesn't say what they need help with. Smelling adventure, "The Hideaway Gang" accepts the invite.

They arrive at the house of Roderick Usher which is a GIANT mansion. Roderick's sister, Madeline Usher, informs them that their parents are missing and that they believe the house to be alive!!!

As the gang sets off to explore the mansion in search of their parents, they each encounter a slew of wacky and bizarre characters.



SHOW TICKETS

TICKETS FOR SHOWS GO ON SALE TWO WEEKS BEFORE OPENING NIGHT

ALL TICKETS NEED TO BE PURCHASED ONLINE

CREW IS TO BE AT ALL SHOWS

Booth Crew is running tech for the show

Costume crew is assisting Costume Designer and Actors with costumes

Set Crew are the ushers and ambassadors for the show

CREW MEMBERS DON'T NEED TO BUY TICKETS

***CREW OPPORTUNITIES**

*Costuming – Laurie Tangren

*Make-up - TBD

*Booth Crew – Eric Webster – Lights/Sound/Spotlights

*Set and Props Design Crew – Kris Schmidt

*Stage Managers – One more?

*Run Crew – part of Set Crew

*Props Master

*Ushering/Show Ambassadors – set crew

***CREW PARTICIPATION CAPS"**

Due to the high numbers of students wanting to participate on crews, we have to set a limit for number of participants. Too many participants in a crew means that there is not enough involvement or a positive experience for all the students.

MAXIMUM NUMBERS

SET

10 – (12 MAX) Middle School

If you participated on a crew the last show that we did, you will be on crew again for this show.

If you were not – you will be put on wait list until an opening occurs.

If you were on a wait list last year and did not get on a crew, you will be this year.

BOOTH

8 Middle School

Wait list priority is based on your year in school. PLEASE CHECK YOUR EMAIL! IF YOU DON'T RESPOND WITHIN A REASONABLE AMOUNT OF TIME YOUR SPOT WILL GO TO NEXT PERSON ON LIST.

COSTUMING

5 MIDDLE SCHOOL

Exceptions will be determined on a case-by-case basis

BOOTH CREW SHADOWS – IF Booth Crew is full and you want to "Shadow" the Booth Crew program, please notify Mr. Webster. Shadows watch and learn so they are ready when they do get on Booth Crew.

Crew Form

Return “Crew Form” to Ms. Tangren by 9/18. (B211)

Crew Lists posted 9/19 by 3:00.

If your name is on the posted crew list, then you must register by going to centennialtheatre.org, and click on registration link.

The crew rehearsals vary and are posted on centennialtheatre.org and the Band app.

**REVIEW THE SCHEDULE TO MAKE SURE YOU DON'T HAVE
TOO MANY CONFLICTS**

***Expectations**

CONFLICTS

You should be able to attend all scheduled dates for your crew. If you have conflicts with the schedule, you must get approval for those conflicts from the Directors. If it is more than two, you may not be selected for crew.

We ask that you honor the commitment to the play and the crew schedule.

PLEASE, other than emergencies and illness, NO LAST minute conflicts.

KNOW THE SCHEDULE. MAKE SURE YOU CAN PARTICIPATE IN THE CREW.

***Expectations**

Performance times and dates

ALL CREW MEMBERS ATTEND EVERY SHOW

11/5/25 – 3:30 – Senior Preview

11/6/25 – 7:00 – OPENING NIGHT

11/7/25 – 7:00

11/8/25 – 5:00

11/9/25 – 1:00

3/29 - 1:00 – SET STRIKE FOLLOWING SHOW

***Expectations**

When called show up on time

THERE ARE MANY COMMUNICATIONS SYSTEMS IN PLACE - KNOW THE SCHEDULE AND KNOW WHAT'S GOING ON

Be on time

Respect of everyone's time - come focused and ready to go.

PARENTS - Pick up your student on time - PLEASE

Play well with others. RESPECT for every person in this program. We all come from different backgrounds and belief systems. We honor personal life philosophies.

***Expectations**

To be on a crew means you want to do the work that is required of each crew, and that when you are here you will do the work. We have HIGH EXPECTATIONS of our crew teams.

While we have fun doing our job, it's not "play time", we are here to get a job done and be part of the team!

Any student who is not meeting expectations of participation, parents will be notified, and a meeting will be set.

Any student who does not want to be here, can be/are disruptive to others that want to be part of the process.

We will be going over what each crew does next in this meeting.

REGISTER!!!!

ONCE THE CREW LIST IS POSTED - REGISTER RIGHT AWAY.

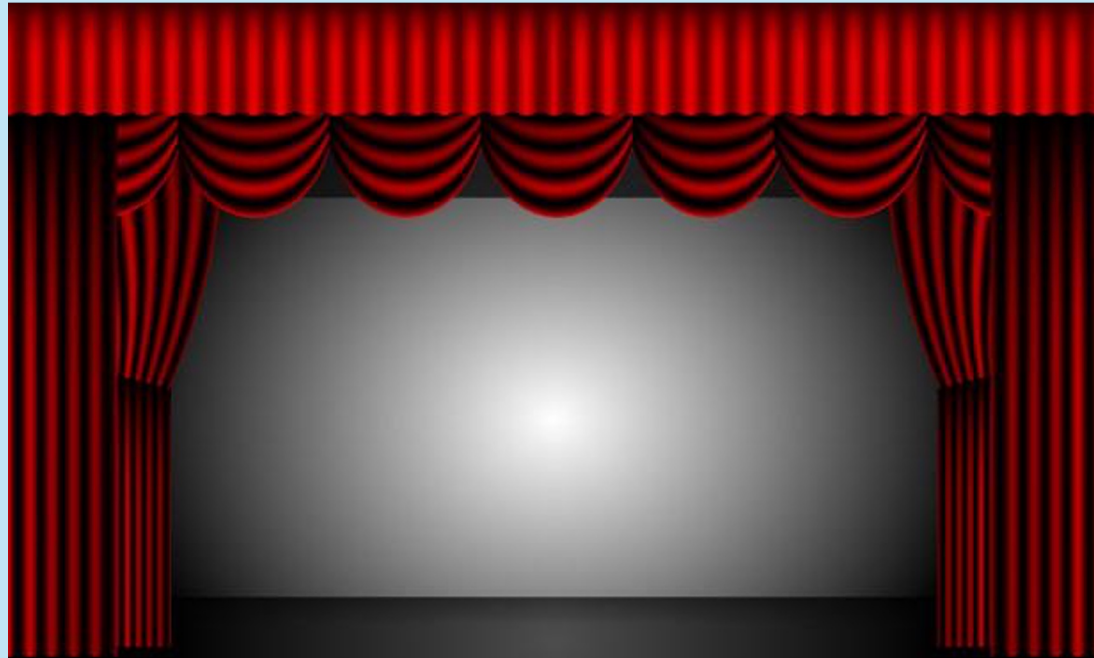
IF YOU ARE NOT REGISTERED BY 9/26 - YOU WILL BE
REMOVED/REPLACED FROM THE CREW!!

IF YOU ARE NOT REGISTERED YOU CANNOT PARTICIPATE AND
WILL BE SENT HOME.

Crew Details

Over the next slides we will go over details of each crew.

This information will also be posted online at centennialtheatre.org



BOOTH CREW

“In the Back in Black”



Booth Crew

- Maximum 8 booth crew positions, including the Booth Director
- 1-2 Booth crew *shadows* (6th-grade students or students who have never done this job before, these students will learn how each position in the booth works)
- Must attend all booth rehearsals and all shows

Booth Crew Responsibilities

- Learn the basics of programming and how to run a spotlight, soundboard, and lightboard

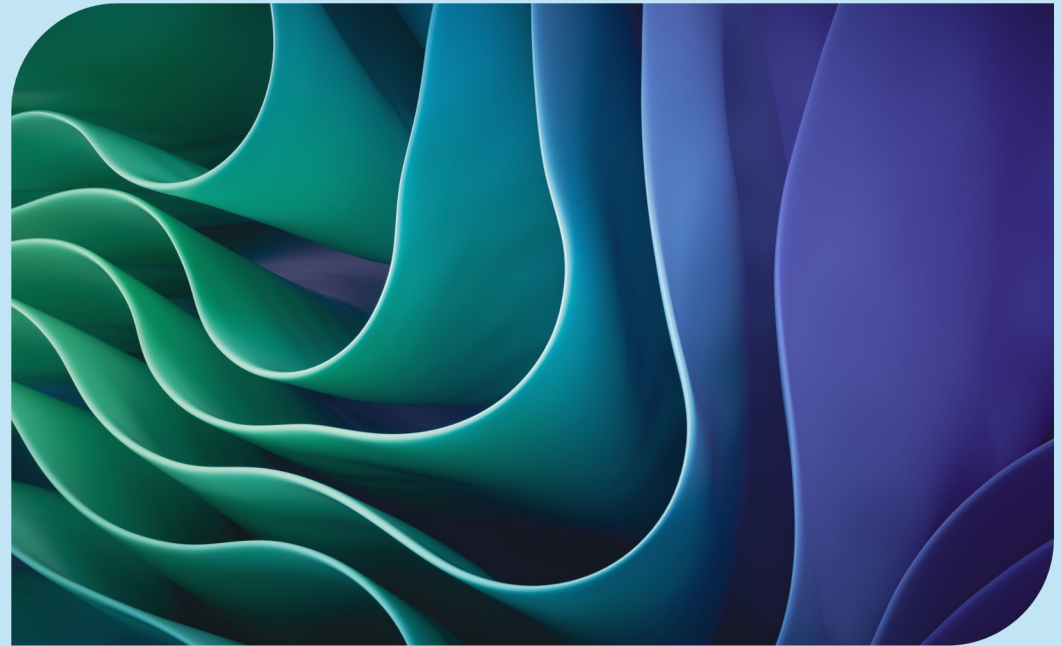
EACH SHOW WE HAVE

- Two Spotlight operators
- One Sound engineer
- One Lighting engineer
- One Booth Director

(Booth crew members rotate through each position for each show, except Booth Director.)

Costume Crew

AKA – Costume Mafia



Costume Crew

- 5 costume crew members maximum, including Costume Lead
- Must attend all costume crew dates, dress rehearsals, and shows



Costume Crew responsibilities

- ★ Measure actors for rental costumes or find costume to fit actors from our costume supply
- ★ Students will learn how to sew on buttons and need to assist actors with tying costumes.
- ★ Organize Middle School costumes
- ★ Organize Costume racks and prepare for costumes
- ★ Transport/organize costumes before and after every performance
- ★ Collect all costumes after the final show during the strike
- ★ Make repairs to costumes



SET CREW

“Nailed it!”



Set Crew

- Maximum 10-12 Set Crew
- 1–2 days per week
- Must attend all shows
- Will only go to 4:30



Set Crew Responsibilities

- Set Crew's main focus is Scenic Painting. You'll paint base colors and add decorative elements using techniques to create textures and effects.
- Learn how to properly use and care for brushes.
- Observe and assist with simple carpentry tasks. (Power tools likely won't be used, but if needed you may handle tools like drills under supervision.)
- Help create the decorations for the lobby
- Create mixed media prop using everyday materials like cardboard, paper-mâché, expanding foam, paper, and wire.
- Learn to properly clean up the work in the hallway behind the theater
- Listen and follow instructions and safety rules
- All rules during the school day apply after school as well. No running, climbing on lockers, etc. Set Crew is not a high energy activity, like most art projects it does require a certain amount of attention, focus and patience.